



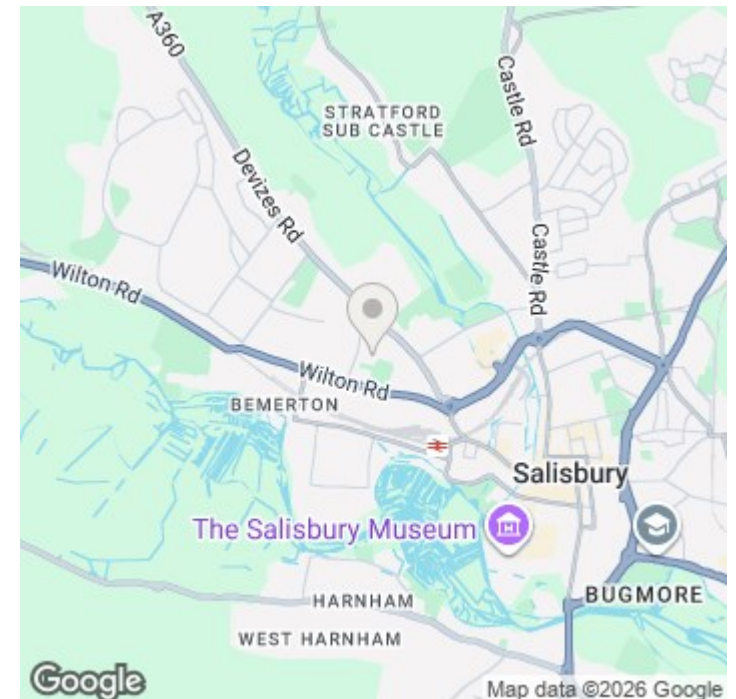
20 Jay Rise, Salisbury, Wiltshire, SP2 7FL

£1,150 PCM

About The Property

Well-presented two-bedroom flat in Jay Rise, Salisbury, offering modern interiors, excellent storage, two parking spaces, a garage, and a garden. Conveniently located close to local amenities with EPC rating C and Council Tax Band B.

- Two-bedroom flat
- Modern fitted kitchen
- Gas hob & electric oven
- Shower over bath
- Laminate flooring throughout
- Ample storage space
- Two parking spaces
- Garage included
- Garden
- Close to local amenities





Further Information

Let available date: 12th June 2026
 NB: This date is provisional and will only be confirmed once referencing has been successfully completed.

Property type: Flat

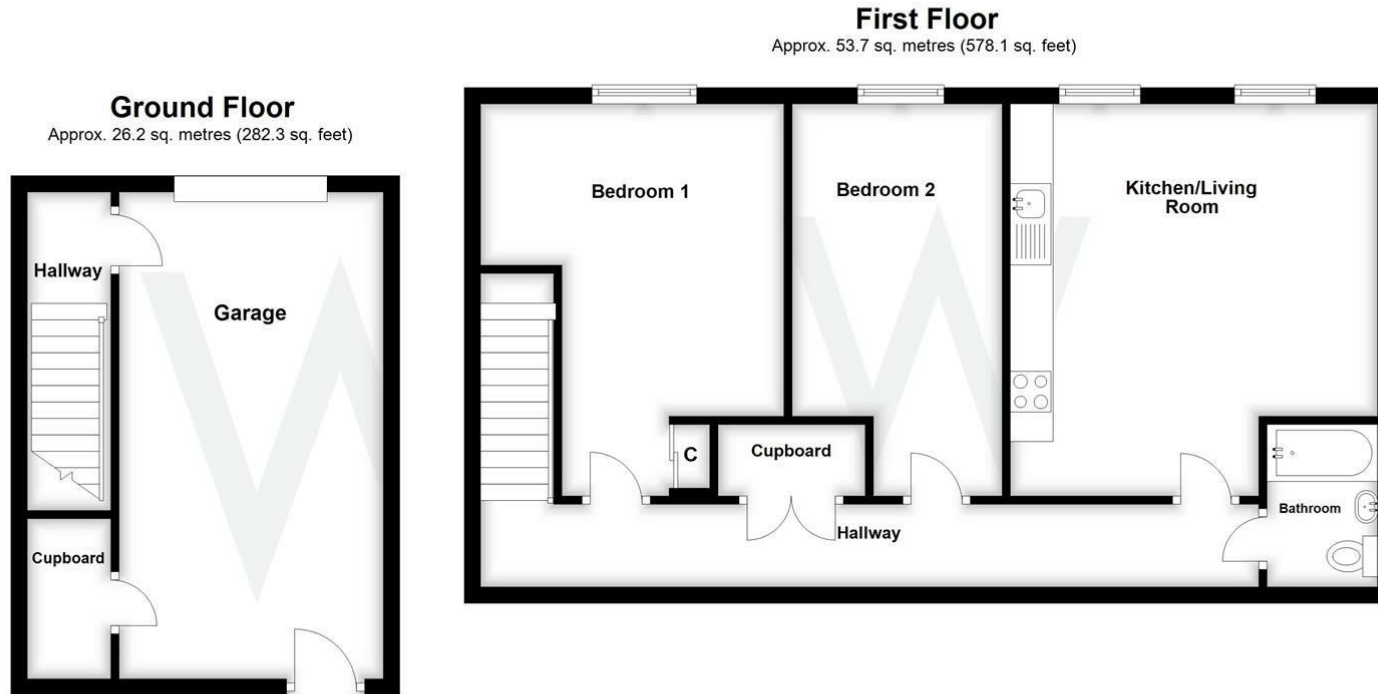
Furnish type: Unfurnished

Deposit: £1,325

Local authority:

Council Tax: Band B

EPC: (null)



Total area: approx. 79.9 sq. metres (860.3 sq. feet)

Energy Efficiency Rating

	Current	Potential
Very energy efficient - lower running costs		
(92 plus) A		
(81-91) B		
(69-80) C		
(55-68) D		
(39-54) E		
(21-38) F		
(1-20) G		
Not energy efficient - higher running costs		
England & Wales	EU Directive 2002/91/EC	